

# SWIT

## Rainproof Flexible LED Light

IP54 certificated Light Head, Controller and Battery



**SL-100P** 100W Flexible SMD-LED



**SL-150P** 150W Flexible SMD-LED



### Flexible Textile SMD



The flexible LED lights SL-100P and SL-150P adopt foldable textile of SMD-LED light head, with high bright output and 2700-6500K continuous adjustment. The foldable design has reduced package size and enhanced the LED reliability.

Model	Power	Color Temp	Illuminance
SL-100P	100W	2700K-6500K	2800Lux @ 1 meter
SL-150P	150W	2700K-6500K	3700Lux @ 1 meter



### Light Controller

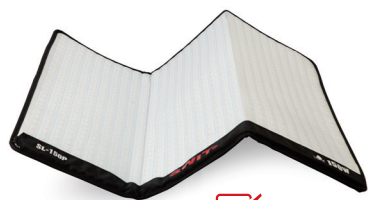
The light controller can be connected to both SL-100P and SL-150P light head, provides LCD display, V-mount battery plate, DMX IN and OUT, and 5V USB power out for wireless DMX adaptor.





## IP54 Rainproof

Both the flexible light head and the light controller are certificated IP54 rainproof, working together with SWIT IP54 rainproof V-mount batteries, you can put the light in rain at any angle without additional protections.



Light head

✓ IP54 Rainproof



Light controller

✓ IP54 Rainproof

Recommended V-mount Batteries



PB-R160S+  
160Wh battery

✓ IP54 Rainproof



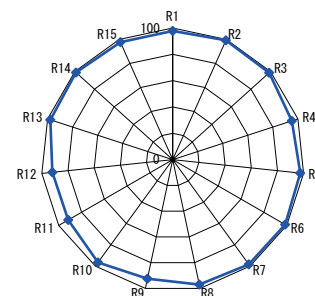
PB-R290S+  
290Wh battery

✓ IP54 Rainproof

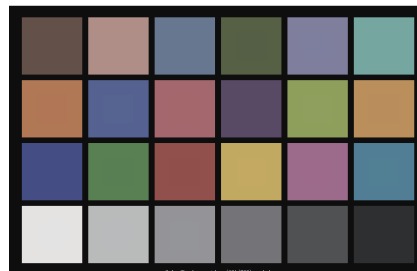


## High CRI & TLCI

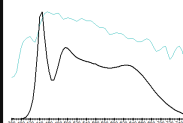
With high end SMD LEDs, the flexible lights have great performance on color rendition. The CRI Ra scores 97, and TLCI scores 97.



Television Lighting Consistency Index-2012



Sector	Lightness	Chroma	Hue
R	0	0	0
R1	0	0	0
R2	0	0	0
R3	0	0	0
R4	0	0	0
R5	0	0	0
R6	0	0	0
R7	0	0	0
R8	0	0	0
R9	0	0	0
R10	0	0	0
R11	0	0	0
R12	0	0	0
R13	0	0	0
R14	0	0	0
R15	0	0	0
Y	0	0	0
YG	0	0	0
G	0	0	0
GC	0	0	0
C	0	0	0
CB	0	0	0
B	0	0	0
BM	0	0	0
M	0	0	0
MR	0	0	0



## Accessories



X-bracket and rotatable light stand connector



Light stand clamp



Optional Purchase

Ball diffuser  
Model # LA-DS100 for SL-100P  
Model # LA-DS150 for SL-150P



Optional Purchase

Eggcrate diffuser box  
Model # LA-BS100 for SL-100P  
Model # LA-BS150 for SL-150P



## Specifications

Model	SL-100P	SL-150P
LED	560pcs SMD LEDs	840pcs SMD LEDs
Power	100W	150W
Illuminance	2800Lux @ 1m	3700Lux @ 1m
Color temp	2700 - 6500K	2700 - 6500K
Color render	CRI 97; TLCI 97	CRI 97; TLCI 97
Input voltage	DC 11 - 36V	DC 11 - 36V
Dimension	Light: 600×470mm; Controller: 239×112×72mm	Light: 600×690mm; Controller: 239×112×72mm
Weight	Light: 0.4kg; Controller: 1.06kg	Light: 0.7kg; Controller: 1.06kg

